



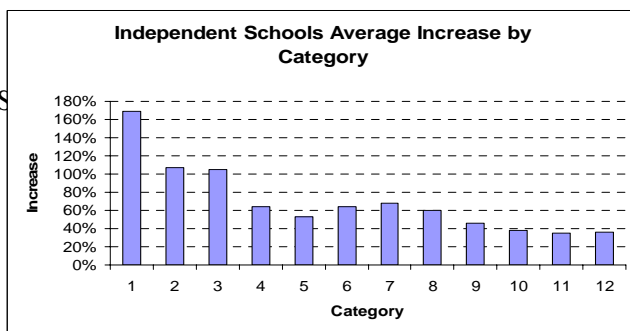
THE SES MODEL – Biggest Increases to the Wealthiest Schools

The Government justifies the introduction of the SES model for funding private schools in 2001 by asserting that the new SES funding model allocates funding on a needs basis.

The reality is that, whilst it may be possible to find the odd example here and there of exceptions, the overall trend has been to give the biggest increases to the schools which are obviously amongst the most wealthy. In general, the more wealthy the school, the larger its increase is likely to be.

Under the old system, which measured school wealth rather than the neighbourhood from which students come, Category 1 schools were the most wealthy, and Category 12 the least. *Chart 1* shows the per cent increase for each Category in the change from the old ERI model to the new SES model.

Chart 1 Increases By Category



By far the biggest increases go to the Category 1 schools which were found to be the most wealthy under the old system.

Almost without exception as the category goes up (i.e. the schools are assessed as being less wealthy), the increase goes down!

Whilst the ERI may have had some anomalies and problems, for the new model to be better would mean that the old produced almost the opposite results of what it was supposed to! That is, the schools should actually have been in the reverse order! This, of course, is nonsense.

Simply looking at some of the schools and their increases is enough to give the lie to the notion that the principle beneficiaries are the neediest schools.

Table 2 shows some of the schools which got the biggest increases. It is not a list of poor or needy schools, but a list of some of the wealthiest schools in the country. The fees alone indicate they are already operating well above the level of most public, and many private, schools. (Average per student expenditure in public schools is around \$10 000).

Of the fifty schools which received the highest increases, only one (a Category 5 school) was not previously in Categories 1 -3.

The preponderance of schools from the money establishment' of Victoria and New South Wales amongst those receiving the highest increases should also be noted.

Many of the ministers in the Howard government are from schools in this list.

It is nonsense to argue that the new system benefits the neediest schools!

Table 2

Funding Increases to Wealthy Schools						
School Name	State	Fees pa Yr. 12	Est Total ERI Funding 2000	EST Total Funding 2004	Increase By 2004	% Increase
Haileybury College	VIC	\$15,852.00	1170751	4586168	3415417	291.7%
Frensham School	NSW	\$16,106.00	229149	877073	647924	282.8%
Mentone Girl's Grammar	VIC	\$14,800.00	578499	2190866	1612367	278.7%
Mentone Grammar School	VIC	\$13,736.00	713551	2623576	1910025	267.7%
Trinity Grammar School	NSW	\$16,350.00	1482489	5318894	3836405	258.8%
Toorak College	VIC	\$13,945.00	606688	2153001	1546313	254.9%
Geelong Grammar School Corio	VIC	\$18,900.00	832682	2928009	2095327	251.6%
Presbyterian Ladies' College	VIC	\$15,996.00	959765	3075197	2115432	220.4%
Caulfield Grammar School	VIC	\$15,195.00	2134444	6573791	4439352	208.0%
The King's School	NSW	\$16,875.00	965388	2946208	1980820	205.2%
St Leonard's College	VIC	\$13973.00	1229422	3510944	2281502	185.6%
Newington College	NSW	\$16,413.00	1310216	3732560	2422344	184.9%
Pittwater House Grammar	NSW	\$15,840.00	269969	740123	470154	174.2%
Wesley College	VIC	\$14,706.00	2891417	7853562	4982145	171.6%
St Andrew's Cathedral School	NSW	\$14,620.00	730894	1954566	1223672	167.4%
Melbourne Girls' Grammar	VIC	\$14,508.00	688067	1790941	1102874	160.3%
Brighton Grammar School	VIC	\$15,822.00	858067	2046185	1188118	138.5%
Melbourne Grammar School	VIC	\$14,940.00	695934	1611110	915176	131.5%
Firbank Grammar School	VIC	\$15,693.00	713070	1627870	914800	128.3%
Carey Baptist Grammar School	VIC	\$14,619.00	1638911	3712024	2073113	126.5%
Sydney Gammar Edgecliff	NSW	\$17,000.00	177905	389126	211221	118.7%
SCEGGS	NSW	\$16,360.00	696947	1452695	755748	108.4%
Lauriston Girls' School	VIC	\$15,891.00	638884	1293421	654537	102.5%
Scotch College	VIC	\$16,065.00	1544325	3094547	15502222	100.4%

Note: Fees as printed in The Weekend Australian June 2-3, 2001, p.6. Increase amounts and per cent tabled in the Senate Committee, from DETYA answer No E179 (6 June p.282

For more detailed information on these and other issues see the other Fact Sheets in this series at:
<http://www.aeufederal.org.au/Debates/schoolscampaign.html>

Authorised and printed by P. Byrne, Federal President, Australian Education Union, 120 Clarendon Street, Southbank VIC 3006.