

See How they Grow

Where are private school enrolments increasing?

Roy Martin

December 2002



See How They Grow: Where are private school enrolments increasing?

Section 1 of 8

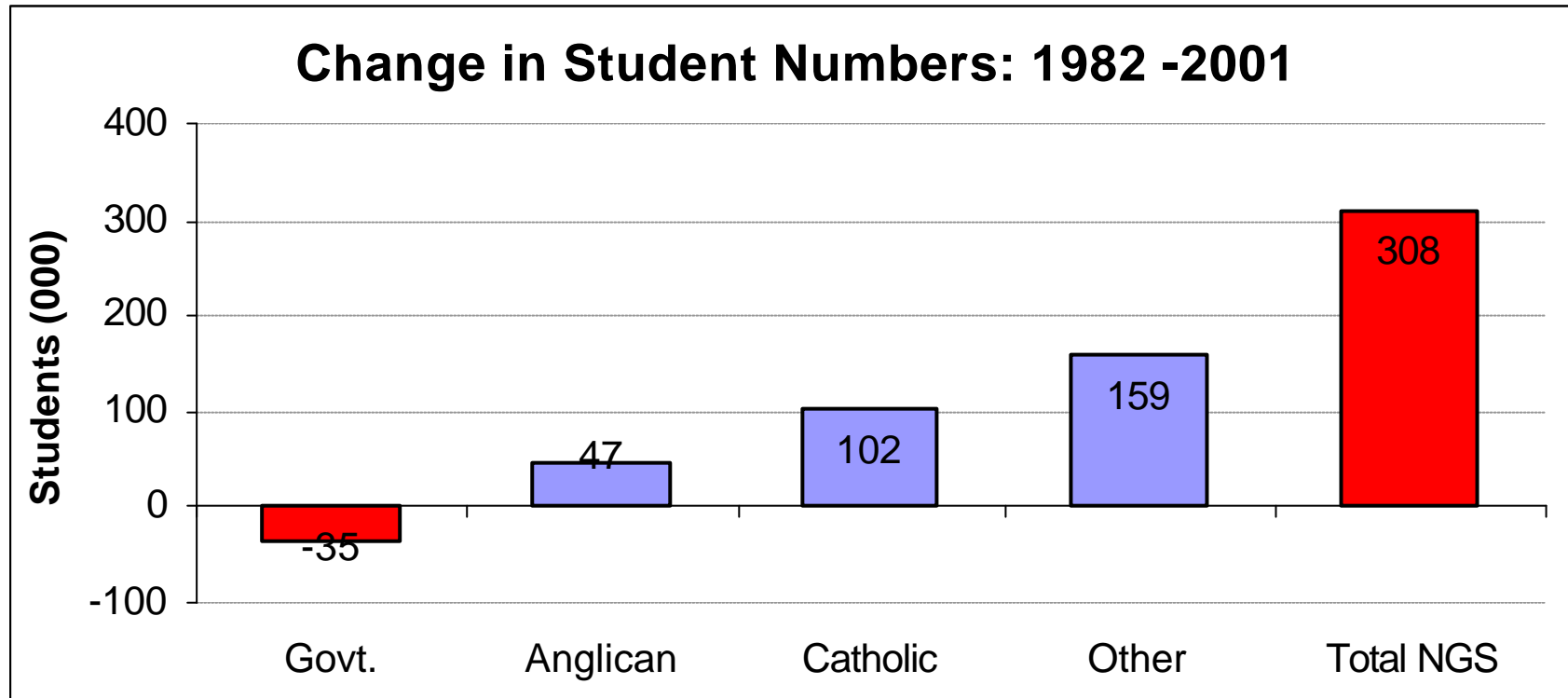
Change in Share of Student Enrolments

1982-2001



See How They Grow: Where are private school enrolments increasing?

Change in Share of Student Enrolments 1982-2001

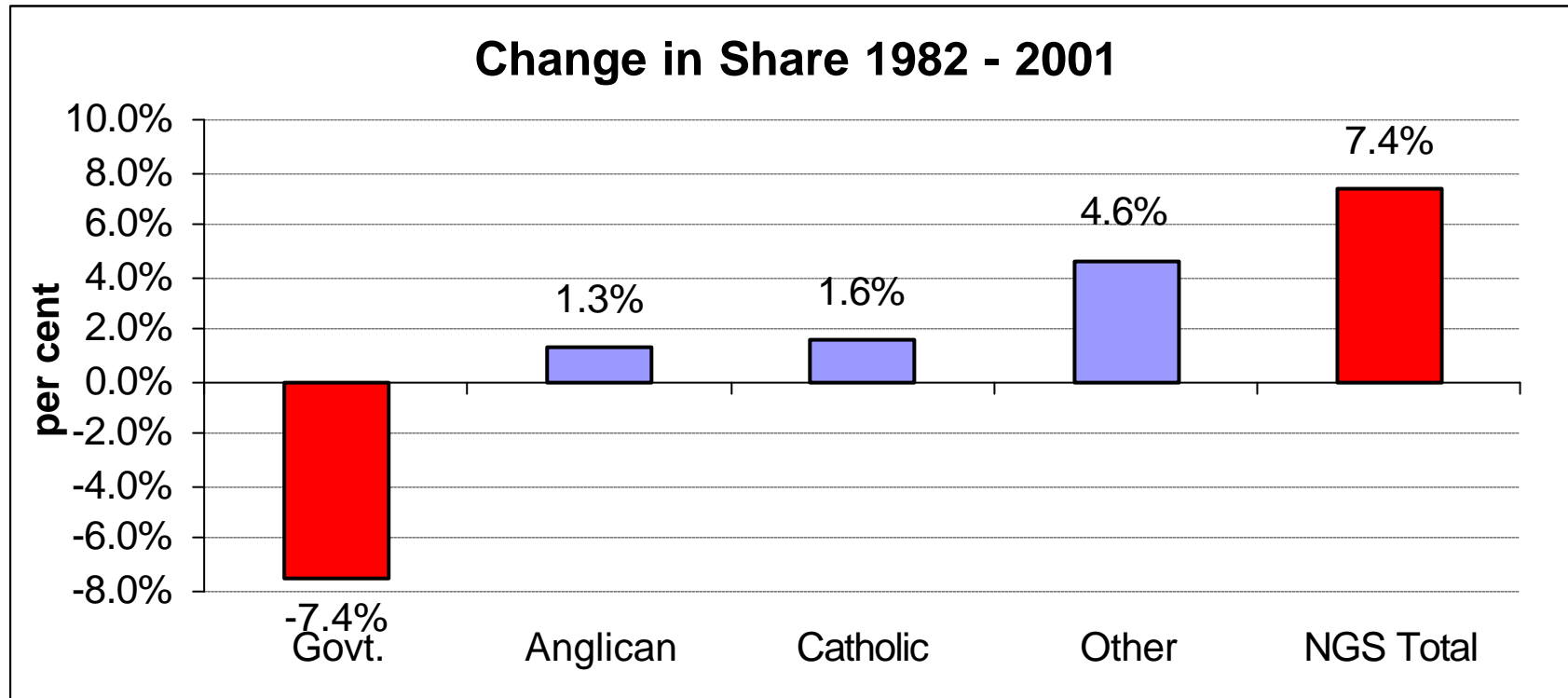


Key Points

- Student enrolments have increased by 273489 over the twenty years.
- The biggest increase is in “other” private schools.



Change in Share of Student Enrolments 1982-2001

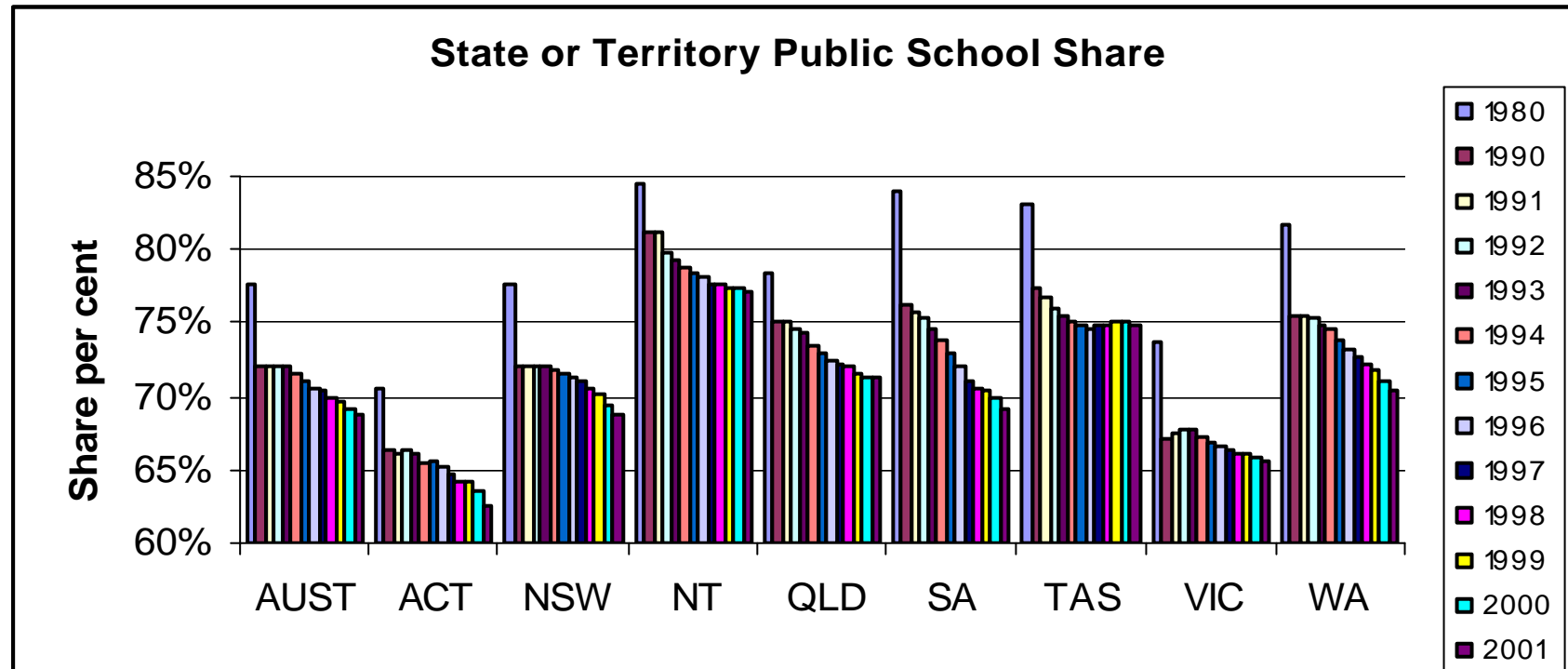


Key Points

- Private school enrolments have increased an average of 0.39% p.a. to a total of 7.4% over twenty years
- “Other” private schools have increased the most, by 4.6%



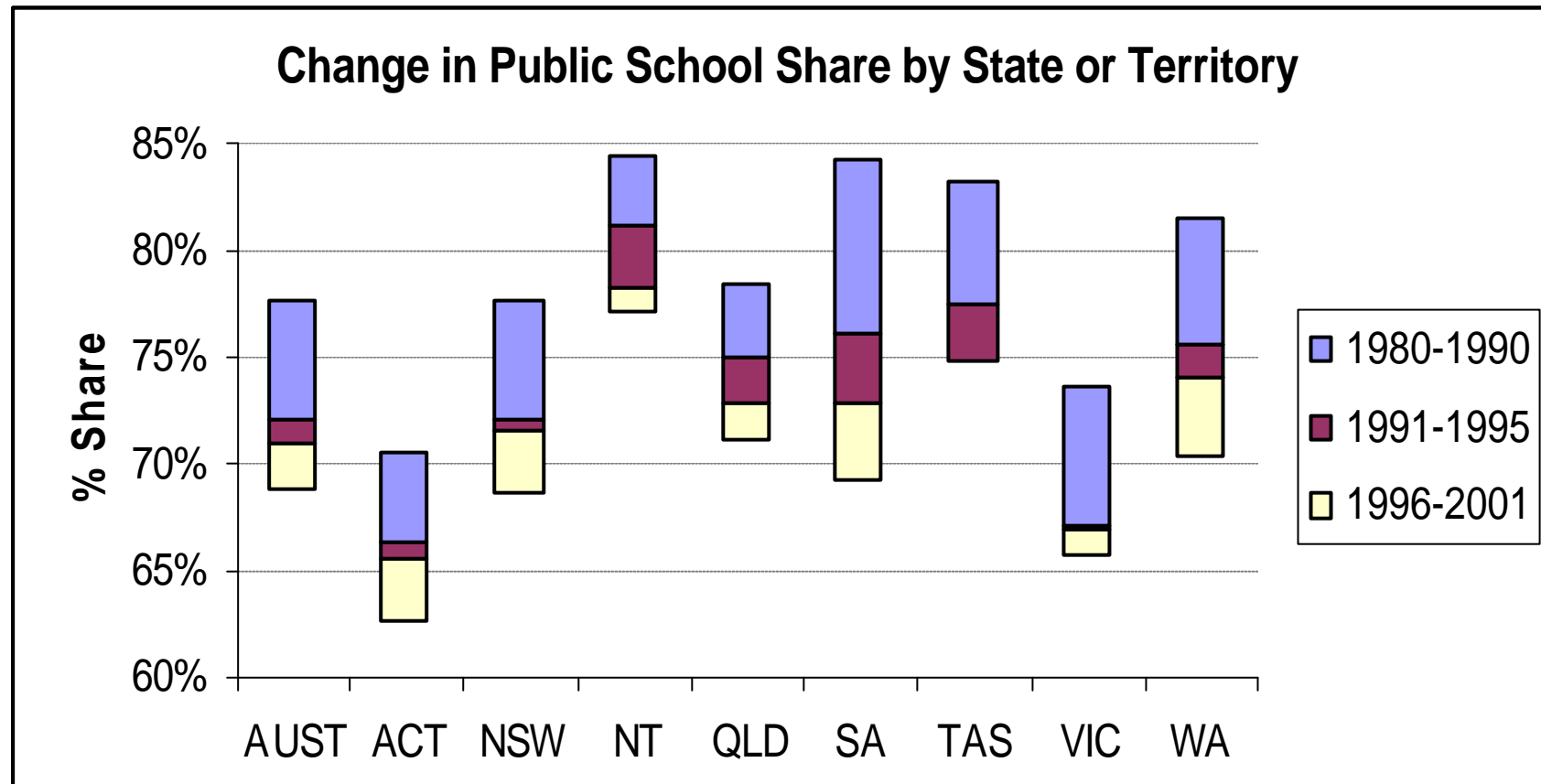
Change in Share of Student Enrolments 1982-2001



Key Points

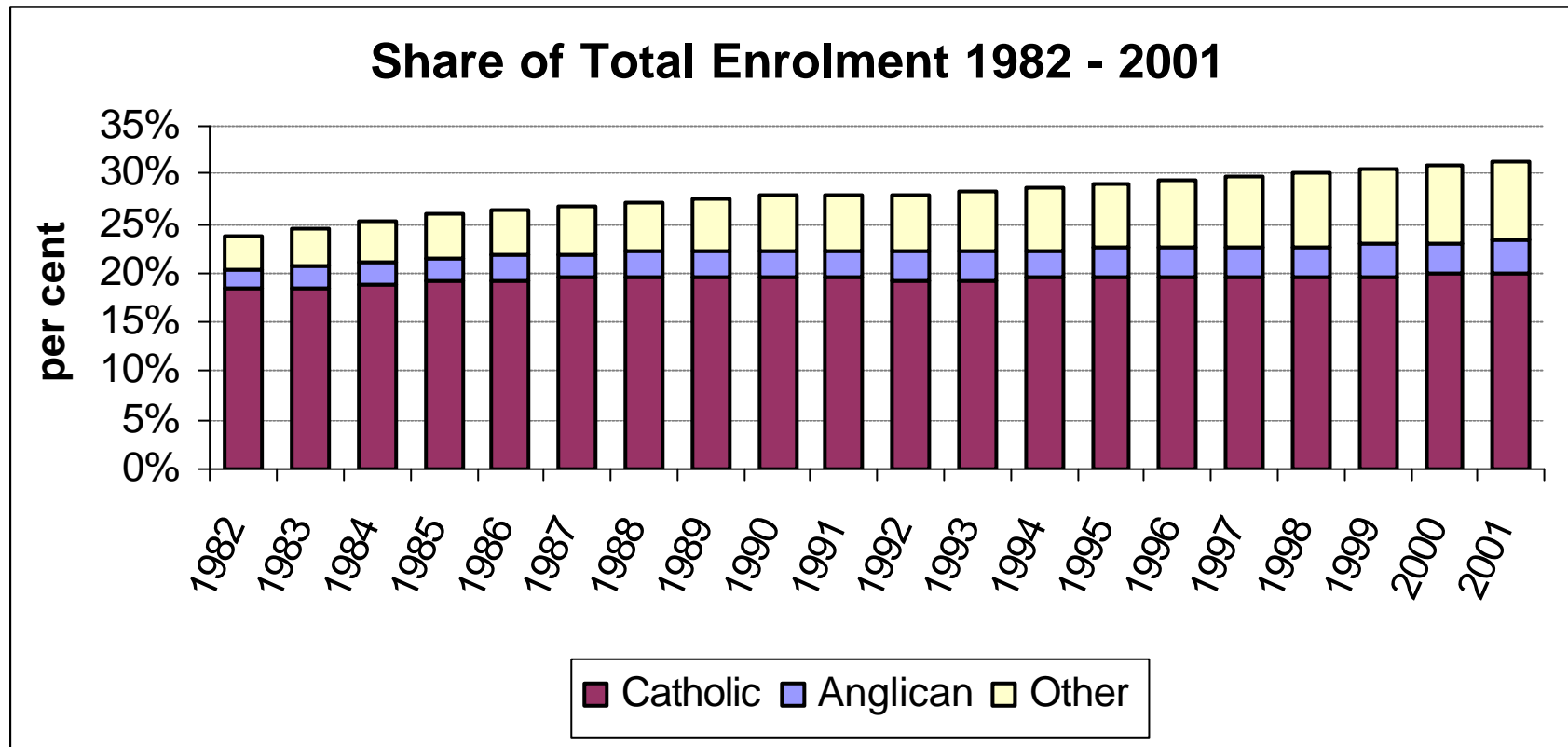
- Whilst there has been a decline in share in all states and territories, the pattern is not the same.

Change in Share of Student Enrolments 1982-2001



- States and territories started from different bases in 1980, and have had differing patterns of change since then.
 - Note: Tasmania actually increased its share by 0.1% between 1996 and 2001

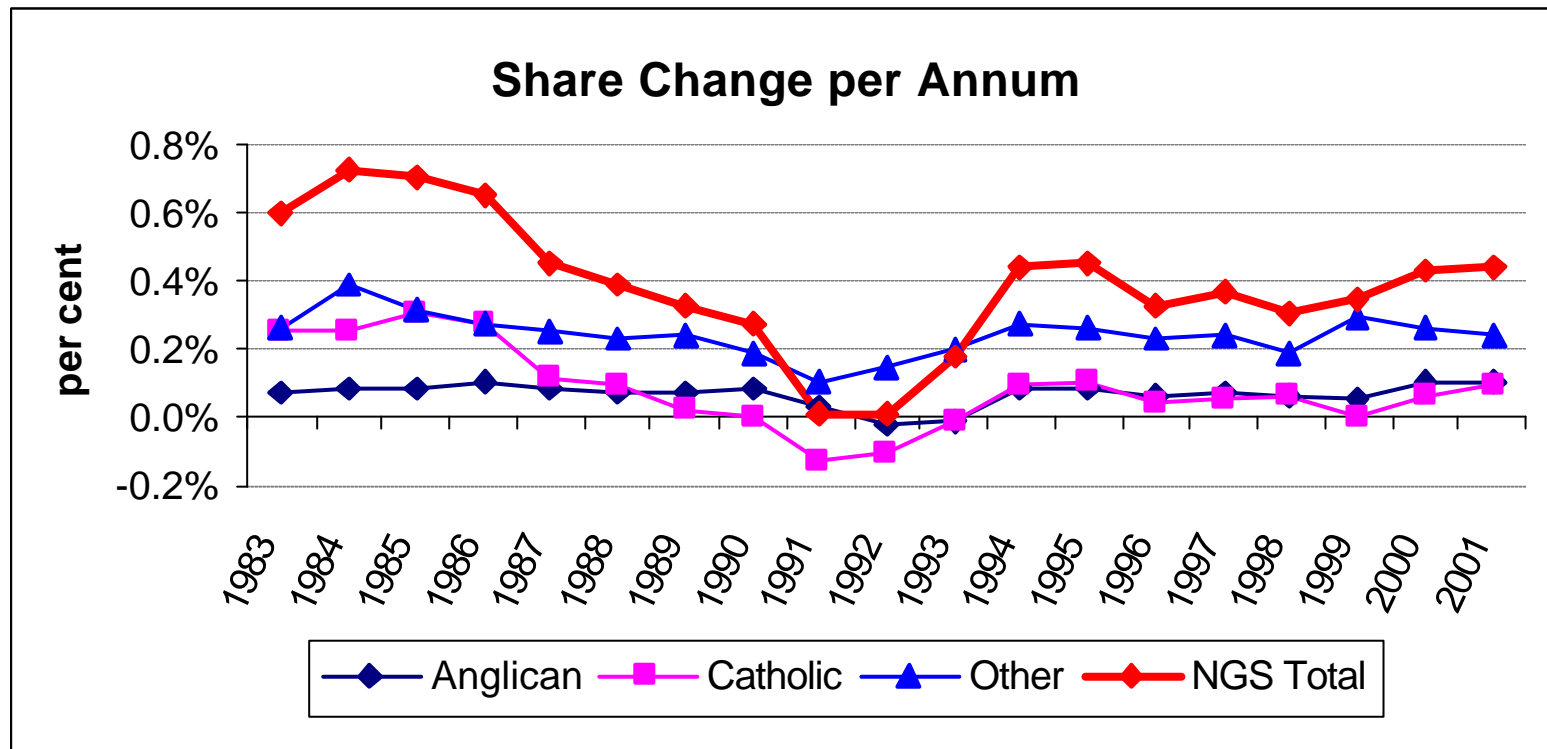
Change in Share of Student Enrolments 1982-2001



Key Points

- Again, the major growth is shown to be in the “other” private school area.

Change in Share of Student Enrolments 1982-2001



Key Points

- The growth in private schools is not steady, and there have been periods of near negative growth
- The Catholic sector actually lost share in the early 1990s

Section 2 of 8

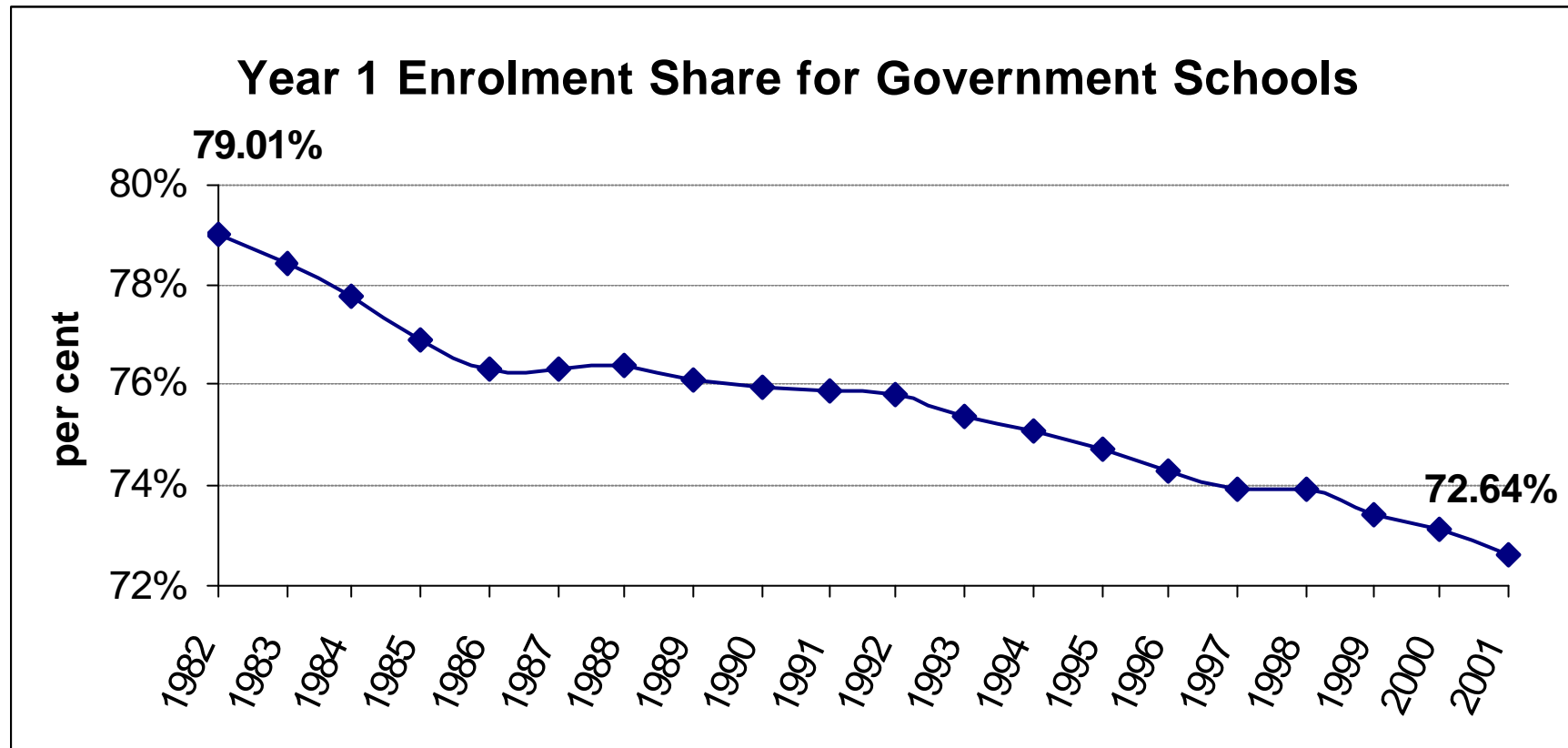
Difference Between Years

1982-2001



See How They Grow: Where are private school enrolments increasing?

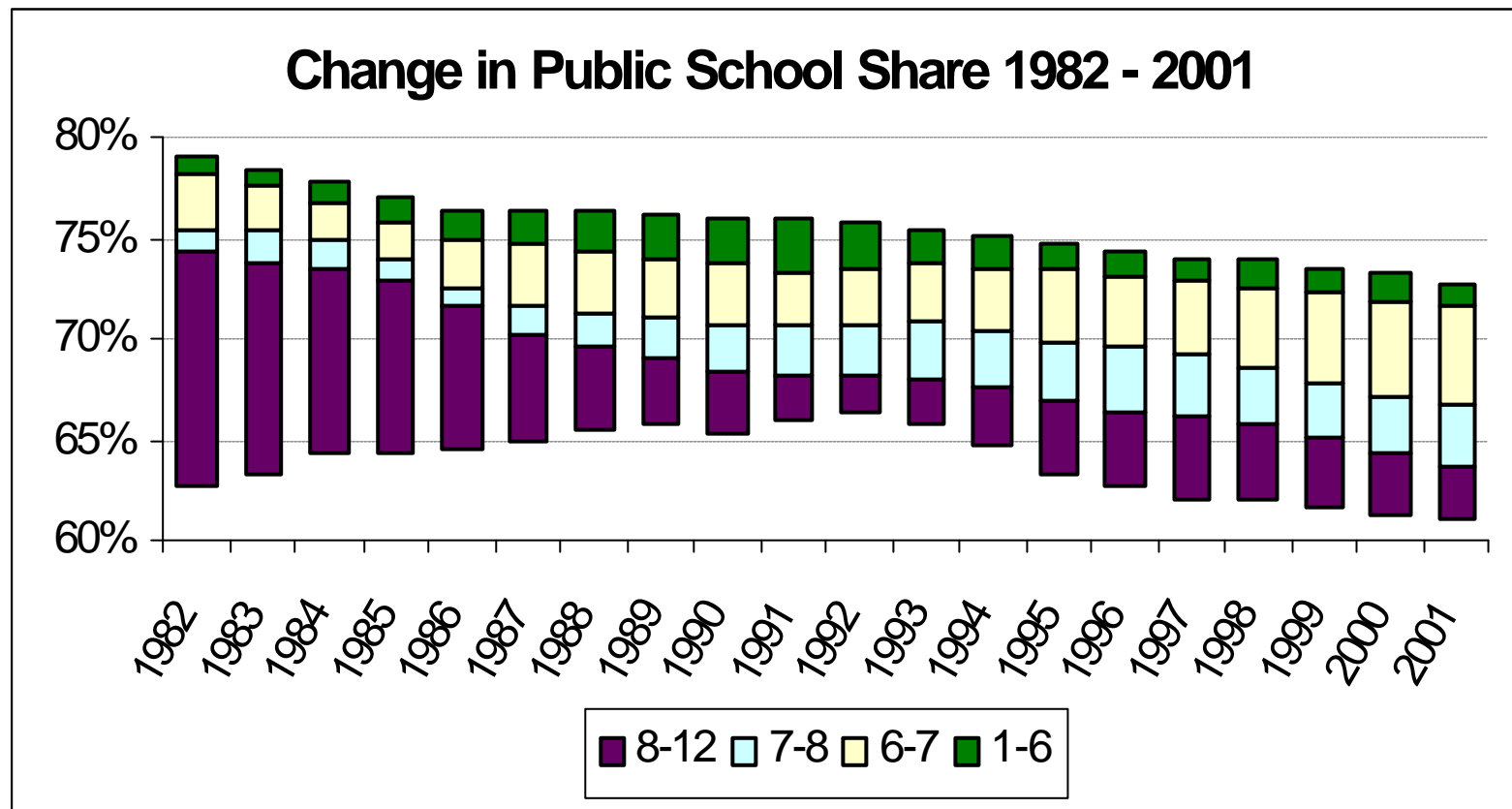
Difference Between Years 1982-2001



Key Points

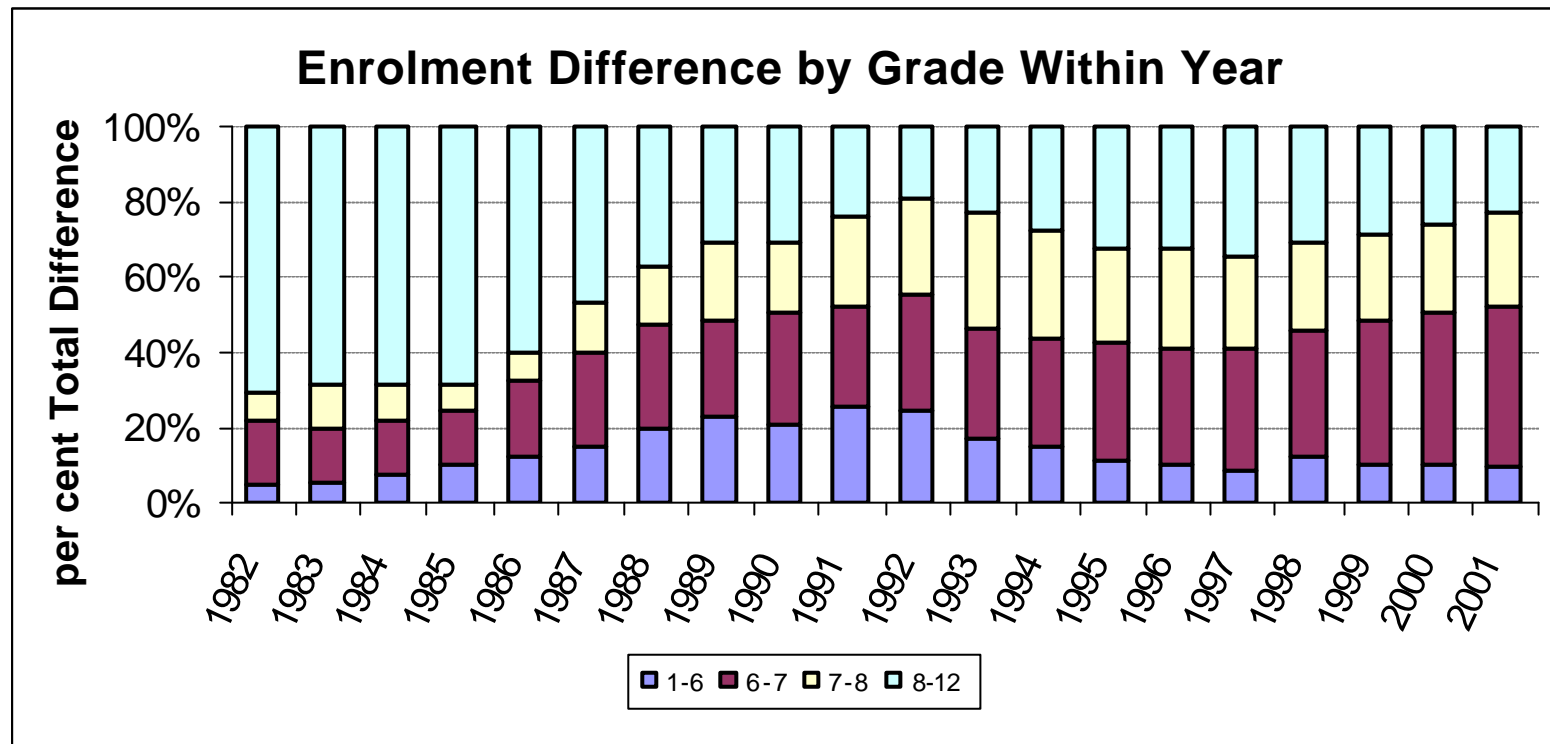
- The proportion of students enrolling in public schools in Year 1 has steadily declined from 79.01% to 72.64%

Difference Between Years 1982-2001



- And declines further as students progress through school.
- Note that the proportion of students entering Year 8 is now about ten per cent less than in 1985

Difference Between Years 1982-2001

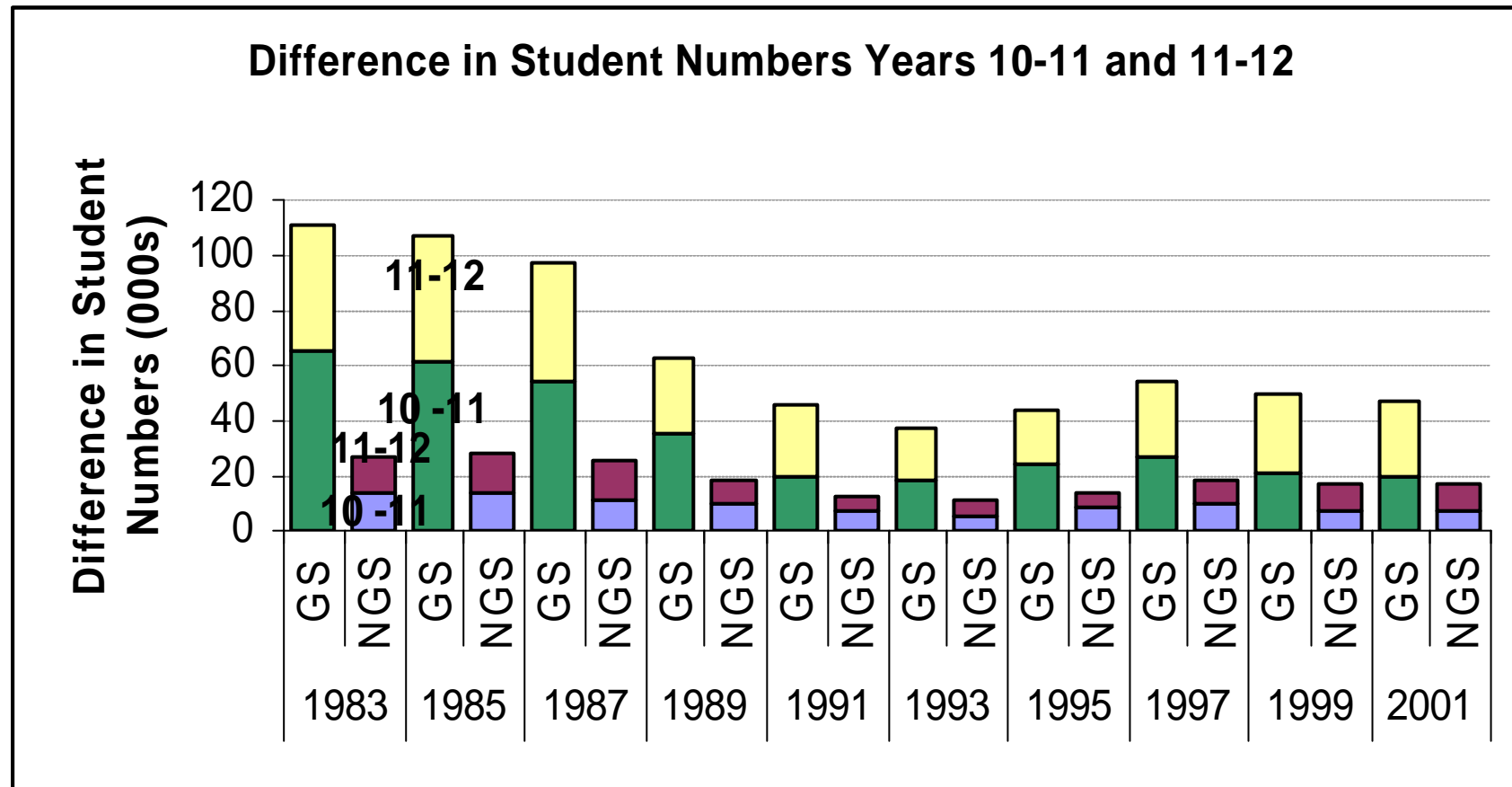


Key Points

- Given this different initial enrolment, the proportion leaving between Year 1 and Year 6, after peaking in 1991, is now the same as in the 1980s
- The place where the difference is growing most is in Years 6 to 8

Note: Shown as per cent of total loss 1-12

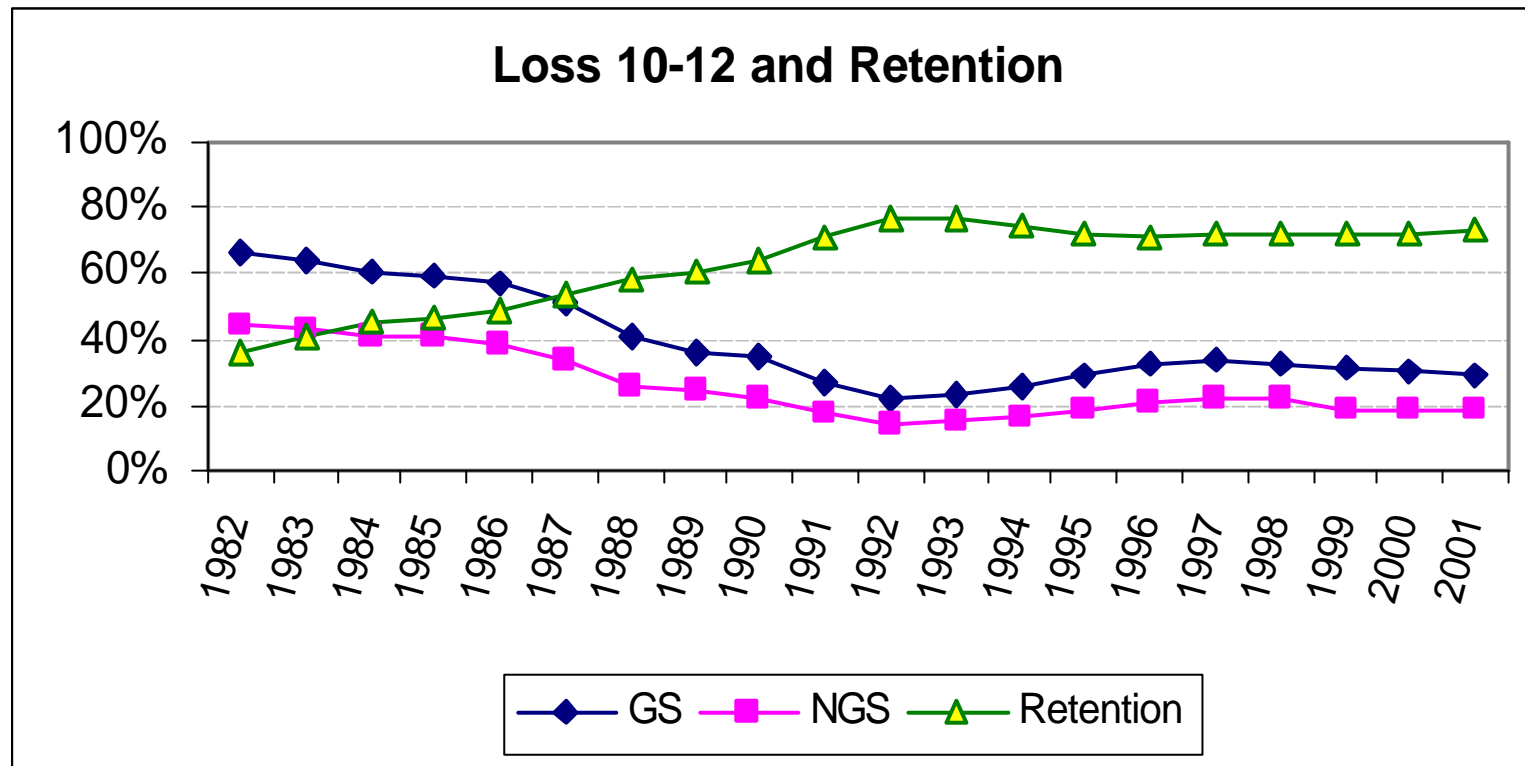
Difference Between Years 1982-2001



Key Points

- Between Year 10 and 12, the loss seems to be out of schooling, not to private schools.

Difference Between Years 1982-2001



Key Points

- And is inversely connected to retention rates for both Public and Private schools.

Note: Both figures are per cent ages and for GS.



See How They Grow: Where are private school enrolments increasing?

Section 3 of 8

Change By Start Year

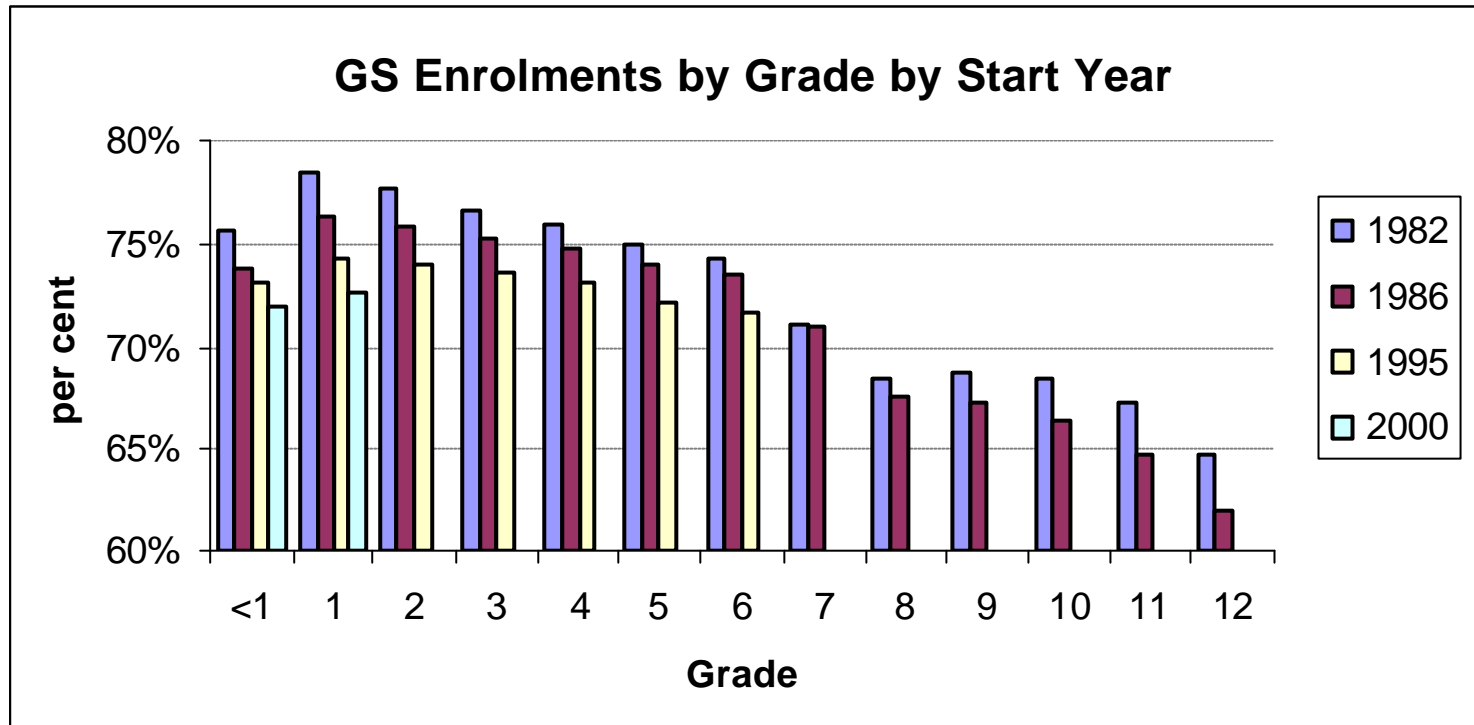
1982-2001

(Start year being the year before Year 1)



See How They Grow: Where are private school enrolments increasing?

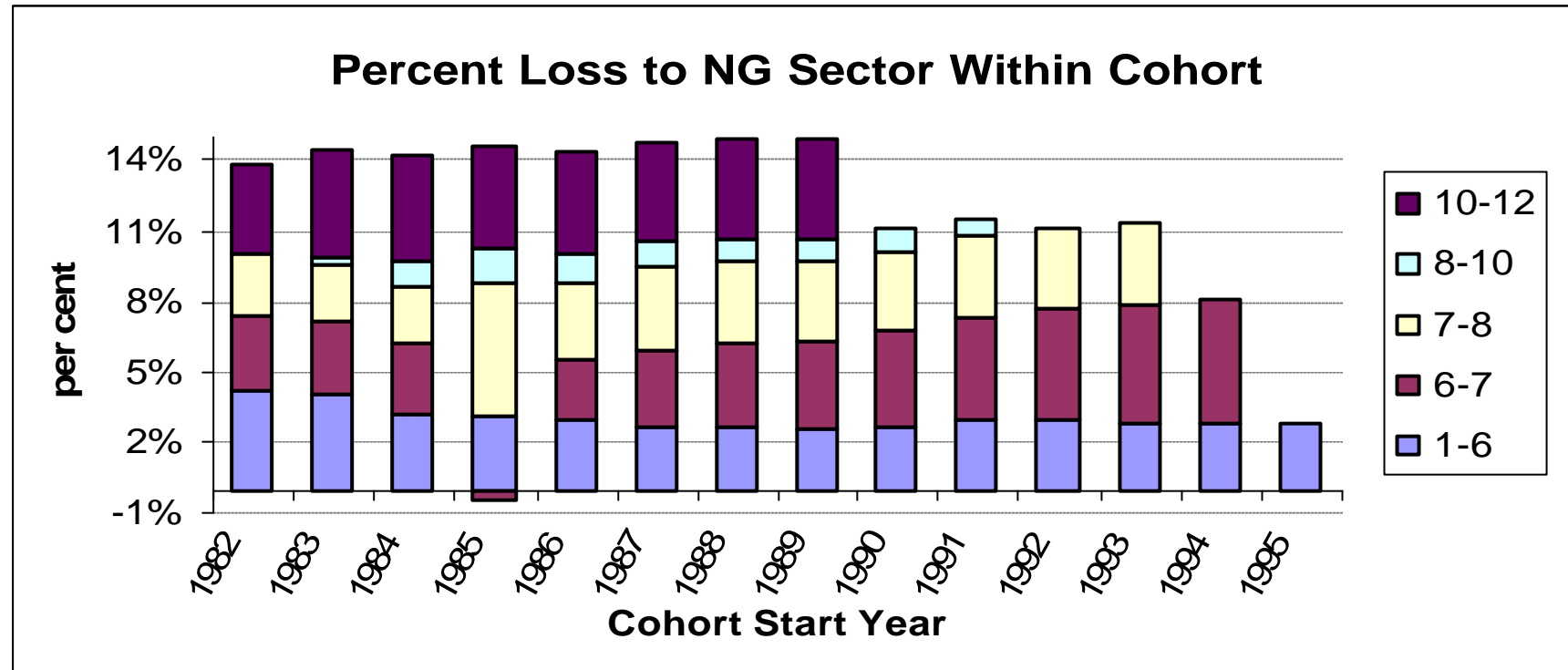
Change By Start Year 1982-2001



Key Points

- There is a pattern of a declining share of enrolments in public schools in all years.

Change By Start Year 1982-2001



Key Points

- The loss within Years 1-6 was declining or steady in 1995
- The loss in Years 6 to 7 was increasing rapidly by 1994, and remaining steady between 7 and 8 to 1993
- The loss between 8 and 10 was declining in 1991.

Section 4 of 8

Growth and Schools



See How They Grow: Where are private school enrolments increasing?

Slide 18

Growth and Schools

Number of Schools		
	GS	NGS
1985	7561	2481
1991	7470	2510
1996	7088	2542
1999	6970	2620
2000	6961	2634
2001	6942	2654
Change	-619	173
%	-8.19%	6.97%

Key Points

- Private schools have increased by 7% (and the number of students by 40%) since 1985
- There are 8% fewer public schools (and 1.5% fewer students.)



Growth and Schools

New Private Schools by State						
	1997	1998	1999	2000	2001	Total
ACT	2		2		1	5
NSW	48	16	19	9	4	96
NT	3	1	1			5
Qld	17	7	3	4	7	38
SA	5	2	2	4	4	17
Tas	4			2		6
Vic	17	7	6	10	3	43
WA	15	3	7	9	5	39
Total	111	36	40	38	24	249

Note 1997 was the year when the backlog of previously unfunded schools became funded.



See How They Grow: Where are private school enrolments increasing?

Growth and Schools

Growth per School - Independent Schools					
	1996-97	1997-98	1998-99	1999-00	2000-01
Average%	6.5%	7.2%	9.5%	7.5%	6.3%
Largest%	818.4%	408.8%	444.9%	345.4%	575.0%
Decrease%	-77.1%	-77.3%	-78.7%	-73.3%	-88.8%
Av. Students	12	12	14	12	
Highest	311	280	352	216	
Lowest	- 408	- 376	- 701	- 404	
Total Students	11,972	11,541	13,966	11,981	

Note: Does not include Catholic systemic schools.



See How They Grow: Where are private school enrolments increasing?

Section 5 of 8

Enrolments By Affiliation (Students 2001)



See How They Grow: Where are private school enrolments increasing?

Slide 22

Enrolments By Affiliation (Students 2001)

(Top Half of Table)

Catholic	653115	63.2%
Anglican	109849	10.6%
Non-Denom	56247	5.4%
Uniting	43557	4.2%
Christian	34113	3.3%
Lutheran	26082	2.5%
Baptist	14154	1.4%
Inter-Denom	13854	1.3%
Other	12630	1.2%
Moslem	10005	1.0%
Jewish	9634	0.9%
Seventh Day	8209	0.8%
Presbyterian	7693	0.7%
Steiner	6146	0.6%

Note: Schools ordered by the size of the enrolments in 2001. % is Share of Total Private School Enrolments



See How They Grow: Where are private school enrolments increasing?

**Enrolments By Affiliation (Students 2001)
(Bottom Half of Table)**

Assemblies of God	5281	0.5%
Pentecostal	5030	0.5%
Orthodox, Greek	4102	0.4%
Catholic, Other	3077	0.3%
Montessori	2682	0.3%
Other Religious	2244	0.2%
Brethren	2176	0.2%
Orthodox, Other	1542	0.1%
Friends	1120	0.1%
Churches of Christ	592	0.1%
Ananda Marga	149	0.0%
Scientology	122	0.0%
Hare Krishna	21	0.0%

Note: Schools ordered by the size of the enrolments in 2001. % is Share of Total Private School Enrolments



Section 6 of 8

Affiliation by Per Cent Increase (with year first reported)



See How They Grow: Where are private school enrolments increasing?

Slide 25

Affiliation by Per Cent Increase (with year first reported) (Top Half of Table)

Moslem	1985	6848%
Orthodox, Other	1986	3661%
Christian	1985	1738%
Catholic, Other	1989	1423%
Churches of Christ	1986	734%
Ananda Marga	1986	453%
Assemblies of God	1989	337%
Steiner	1989	236%
Scientology	1997	231%
Brethren	1985	185%
Orthodox, Greek	1985	181%
Montessori	1989	153%
Baptist	1985	143%
Pentecostal	1985	134%

Note: This slide orders affiliations by the size of their increase since 1985 or the first year in which they were recorded with an enrolment, whichever came first. Moslem enrolments in 1985 were 144 and have increased to 10005 in 2001. This makes them the fastest growing affiliation. “Other religious” is a bit deceptive, as this generally means they are now recorded in more specific affiliations.



Affiliation by Per Cent Increase (with year first reported) (Bottom Half of Table)

Lutheran	1985	119%
Inter-Denom	1985	91%
Non-Denom	1985	76%
Other	1985	72%
Friends	1985	63%
Anglican	1985	60%
Jewish	1985	42%
Seventh Day	1985	33%
Uniting	1985	25%
Catholic	1985	14%
Presbyterian	1985	1%
Other Religious	1985	-23%
Hare Krishna	1986	-59%

Note: This slide orders affiliations by the size of their increase since 1985 or the first year in which they were recorded with an enrolment, whichever came first. Moslem enrolments in 1985 were 144 and have increased to 10005 in 2001. This makes them the fastest growing affiliation. “Other religious” is a bit deceptive, as this generally means they are now recorded in more specific affiliations.



Section 7 of 8

Affiliation by Increase in Students and per cent of Total Private School Growth



See How They Grow: Where are private school enrolments increasing?

Slide 28

Affiliation by Increase in Students and per cent of Total Private School Growth (Top Half of Table)

Catholic	78111	30%
Anglican	41082	16%
Christian	32256	12%
Non-Denom	24218	9%
Lutheran	14156	5%
Moslem	9861	4%
Uniting	8781	3%
Baptist	8338	3%
Inter-Denom	6593	3%
Other	5296	2%
Steiner	4314	2%
Assemblies of God	4073	2%
Pentecostal	2884	1%
Catholic, Other	2875	1%

NOTE: This shows the increase in the number of students attending school in that affiliation from 1985 (or first reported year) to 2001. The per cent is proportion of the total private school increase. That is, 100% is the increase in private school enrolments from 1985 to 2001.



**Affiliation by Increase in Students and per cent of Total Private School Growth
(Bottom Half of Table)**

Jewish	2847	1%
Orthodox, Greek	2644	1%
Seventh Day	2028	1%
Montessori	1620	1%
Orthodox, Other	1501	1%
Brethren	1413	1%
Churches of Christ	521	0%
Friends	434	0%
Ananda Marga	122	0%
Presbyterian	104	0%
Scientology	85	0%
Hare Krishna	-30	0%
Other Religious	-674	0%

NOTE: This shows the increase in the number of students attending school in that affiliation from 1985 (or first reported year) to 2001. The per cent is proportion of the total private school increase. That is, 100% is the increase in private school enrolments from 1985 to 2001.



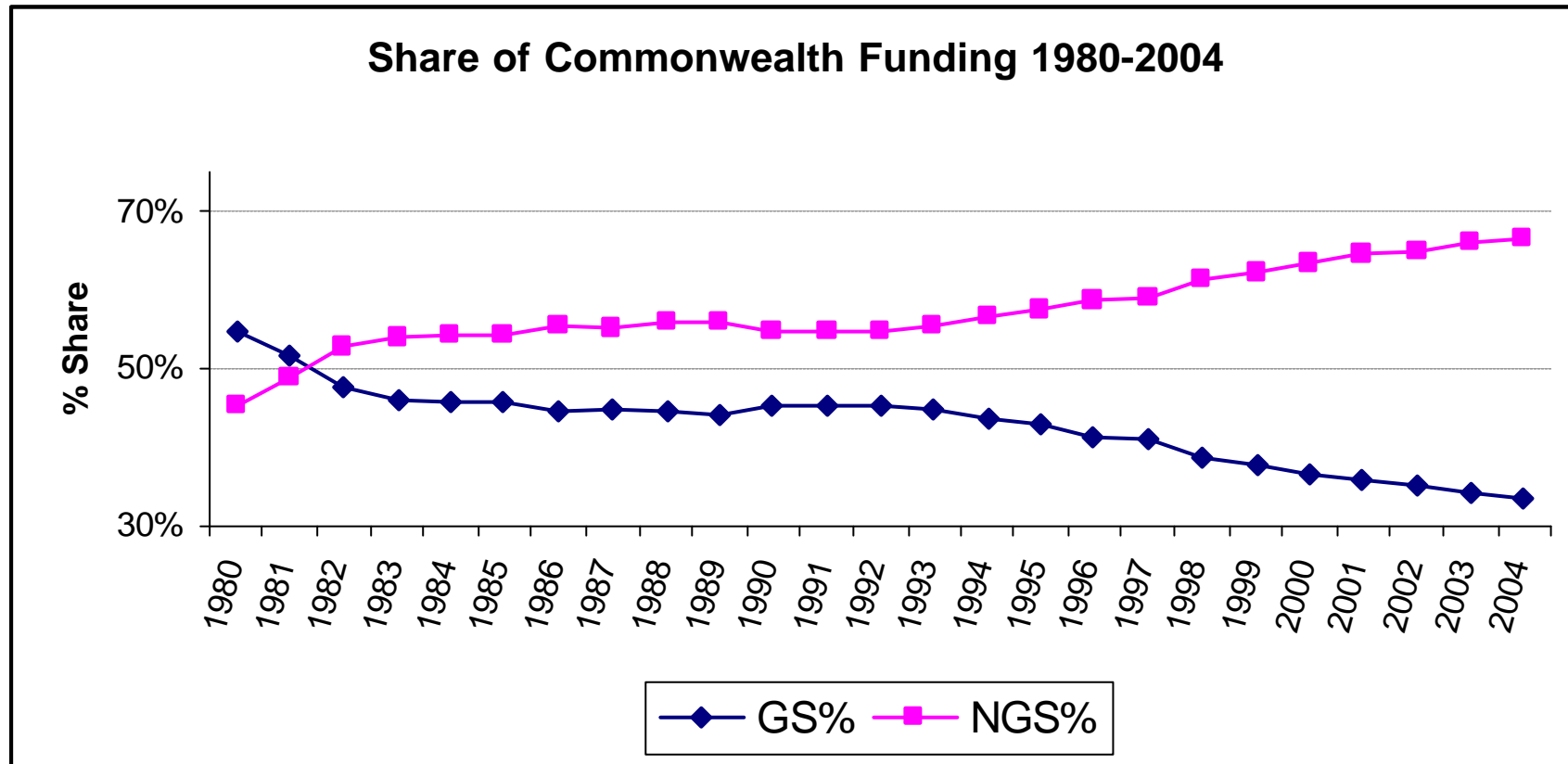
Section 8 of 8

Funding



See How They Grow: Where are private school enrolments increasing?

Funding



Key Points

- Commonwealth funding has increasingly gone to private schools
- And will do so even more by 2004



Conclusions



See How They Grow: Where are private school enrolments increasing?

Slide 33

Conclusions (1 of 2)

The Transfer from Public to Private

- The proportion of students enrolling in pre- Year 1 and Year 1 in public schools has declined steadily, creating a lower base.
- The major transfer from public to private schools occurs around the transition to secondary schools (Years 6-8).
- This appears to be getting worse – the gap between primary and secondary share of enrolments is growing.
- Post compulsory enrolments seem to be affected more by retention rates than public/private transfers.



Conclusions (2 of 2)

Growth within the Private Sector .

- In per cent terms, the non-Catholic, non-Anglican (“other non-government”) is where the major growth has taken place.
- However, in terms of student numbers, the major growth is in the major affiliations. Catholic and Anglican schools between them account for almost half of the increase in enrolments in private schools since 1985.

Funding

- There is every indication that private school growth is being driven by increased funding, especially from the Commonwealth.



Note on Data

- Data is taken from Commonwealth Gazette and data supplied on request by DEST and ABS. Data often do not tally and are difficult to cross-tabulate. (e.g. the number of private schools is frequently different in different lists when one would expect it to be the same). I have, in all cases, used the best data available, but cannot claim that it is definitive because of this difficulty.
- Funding Data is from States Grants Acts reports.

