

REBUILDING
AUSTRALIAN SCHOOLS -
POSSIBILITIES AND
IMPLICATIONS

Adam Rorris

about this presentation

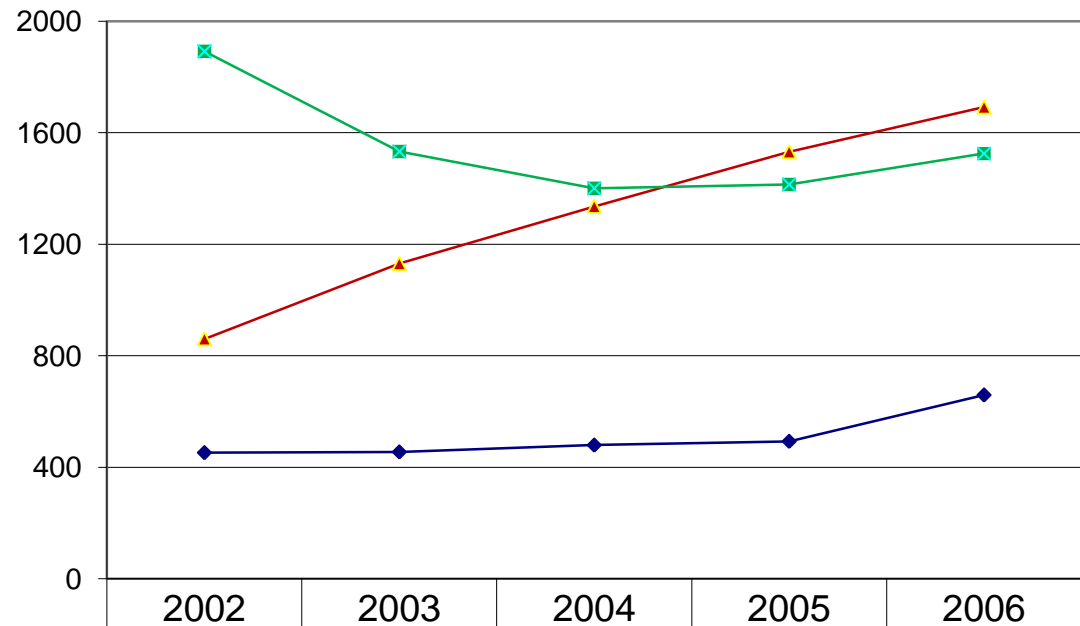
- Current school facilities – neglect and uneven development
- The New BER Investment – are we there yet ?
- The BER and its limitations
- Where to now ?

A decorative horizontal bar at the top of the slide, consisting of an orange rectangular block on the left and a blue rectangular block on the right. The text is centered within the blue block.

Current school facilities –
neglect and uneven development

Behind other Comparable Countries

Average per Student Expenditure on Capital Improvements
(Australian Dollars, nominal prices)

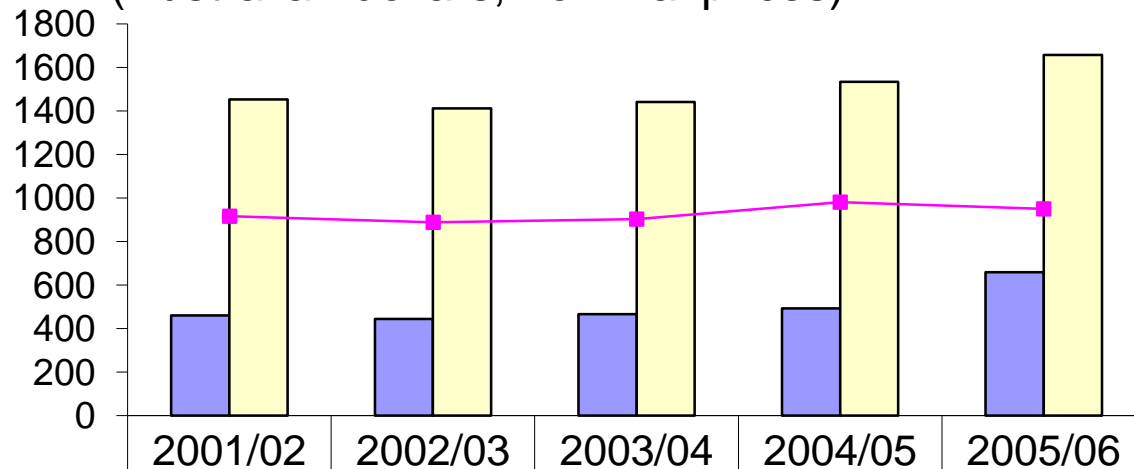


◆ Australia (public schools)	452.5	455	479.5	493	659
▲ UK (state maintained schools)	861	1131	1336	1532	1693
■ USA (public schools)	1892	1532	1400	1415	1525

Behind other Comparable Countries

Per Capita Shortfall in Capital Funding of Australian Public Schools,

(Australian dollars, nominal prices)

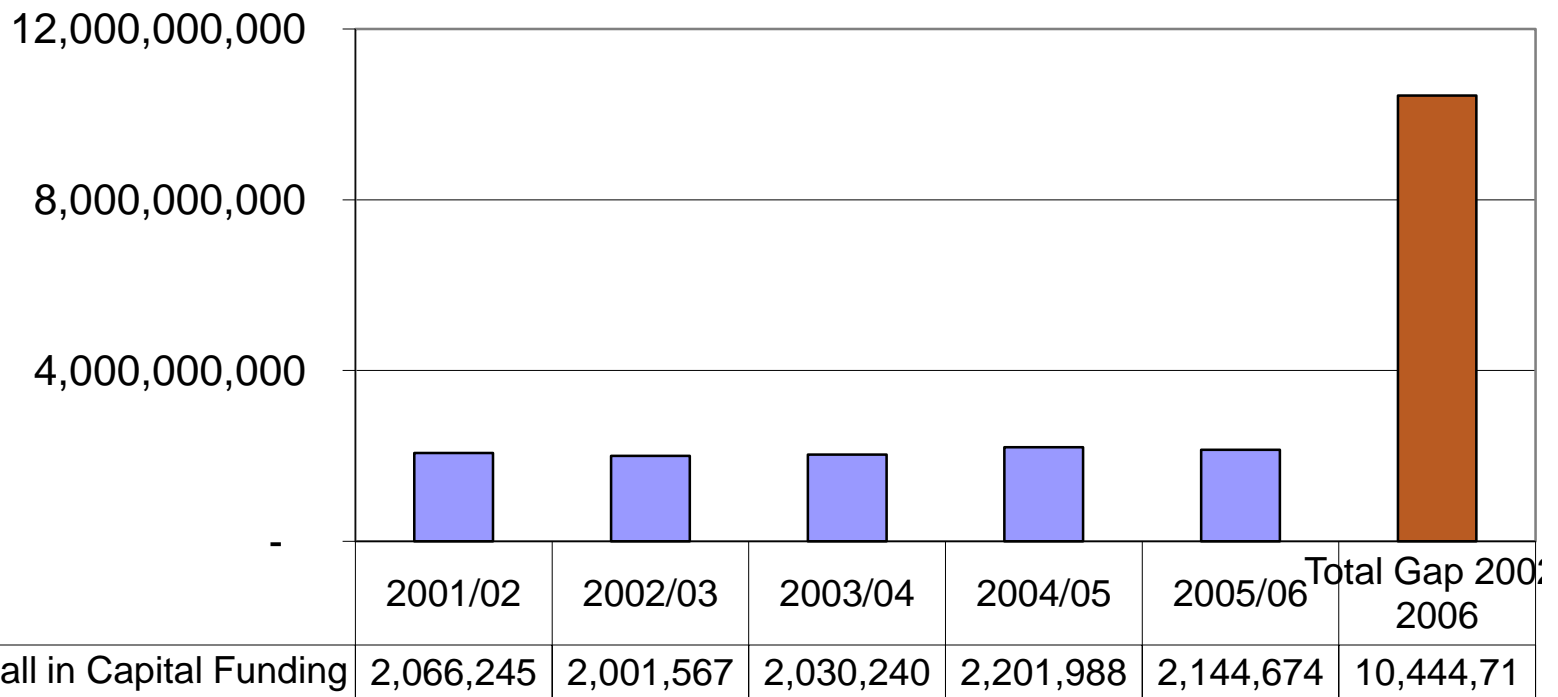


■ Australia Public Schools	461	444	466	493	659
■ Average UK/USA Public Schools	1453	1411	1441	1534	1658
—■ Per Capita Gap	915	888	902	980	950

Behind other Comparable Countries

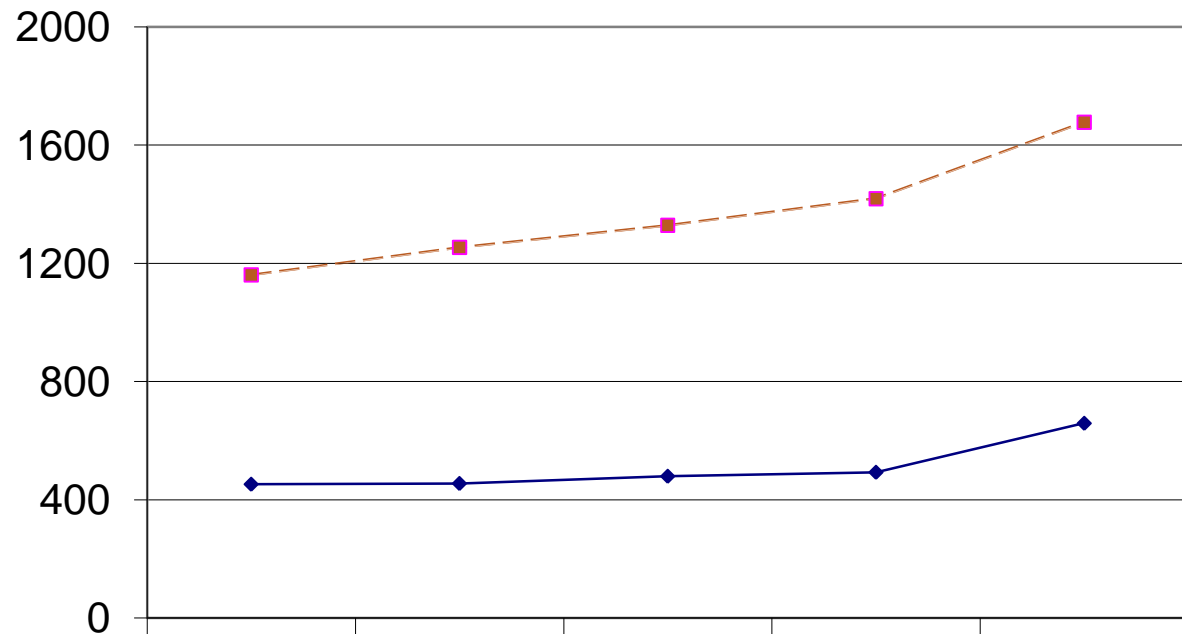
Shortfall in Capital Funding of Australian Public Schools,
Compared to Average Capital Funding of UK/USA public
Schools

(Australian Dollars, nominal prices)



Unbalanced investment – public and private sectors

Average per Student Expenditure on Capital Improvements
(nominal prices)



—◆— Australia (public schools)

2002

2003

2004

2005

2006

452.5

455

479.5

493

659

—■— Australia (private schools)

1161

1254

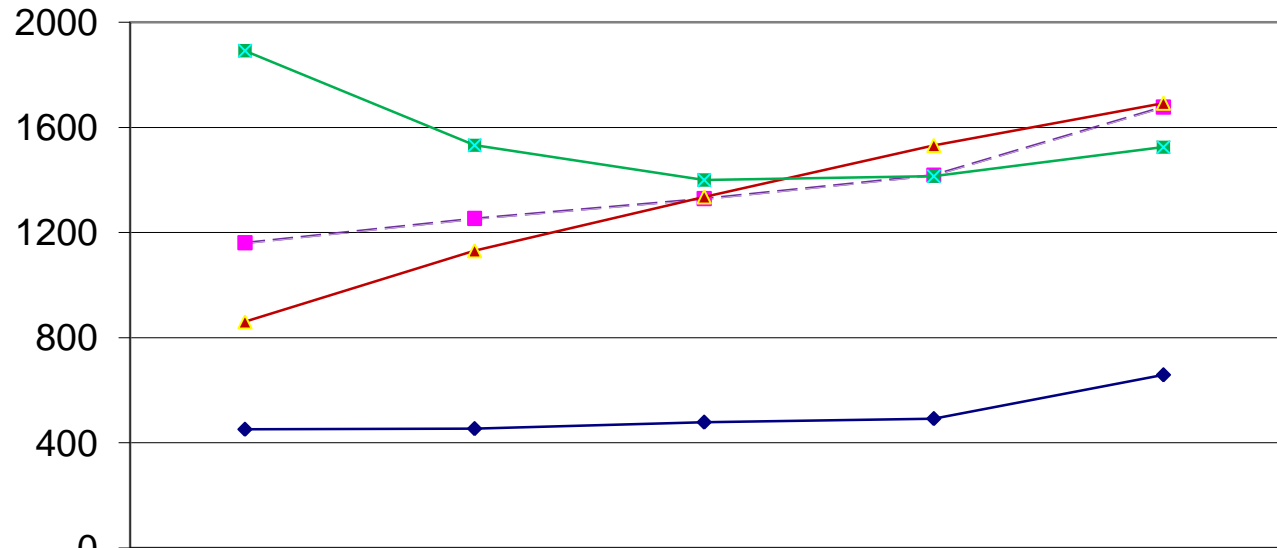
1329

1419

1678

An interesting fit – Australian private schools and international public schools

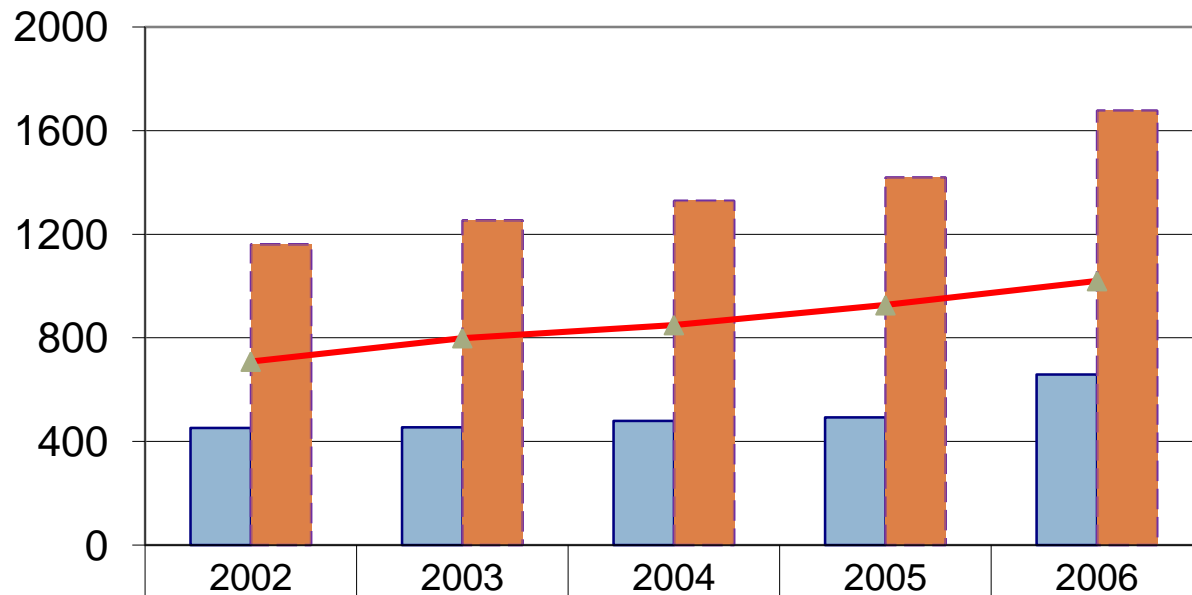
**Average per Student Expenditure on Capital Improvements
(Australian Dollars, nominal prices)**



	2002	2003	2004	2005	2006
—◆— Australia (public schools)	452.5	455	479.5	493	659
-■- Australia (private schools)	1161	1254	1329	1419	1678
-▲- UK (state maintained schools)	861	1131	1336	1532	1693
-×- USA (public schools)	1892	1532	1400	1415	1525

Unbalanced investment – public and private sectors

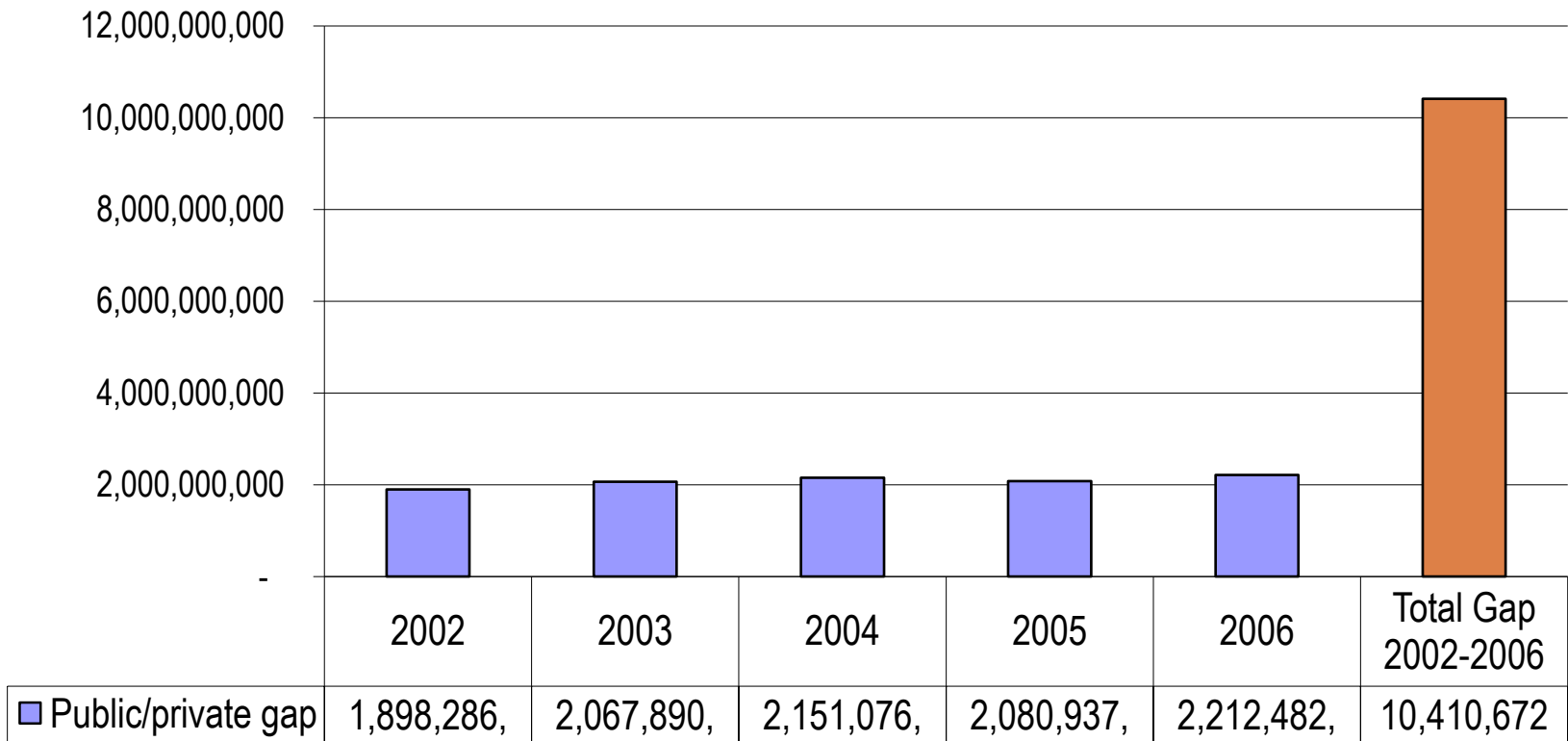
Average per Student Expenditure on Capital Improvements
(nominal prices)



■ Australia (public schools)	452.5	455	479.5	493	659
■ Australia (private schools)	1161	1254	1329	1419	1678
—▲ Capital Investment Gap	709	799	850	926	1019

Unbalanced investment – public and private sectors

Annual Gap in Capital Funding for Public Schools, in constant prices (2008)



Dynamic investment strategies – the emerging global context

- New pedagogies (personalised learning and ICT)
- Sustainable buildings and practices
- Early childhood and VET
- Community use of facilities – demographic changes

The title is presented on a horizontal bar that is split into two color sections: an orange section on the left and a blue section on the right. The text is white and spans across both sections.

The New BER Investment – are we there yet ?

The quantum is significant

- Size of expenditure is significant – can have impact (compare with UK/USA per annum average)
- Insert chart showing projected annual expenditure in public schools per student for period 2009-2011 and compare with international trend

Focus on primary schools

- concentrates expenditure
- starts with easier level of schooling
- addresses previous under-funding of primary schools
- Timing during recession means better value for construction spending



The BER and its limitations

Limitations

- Expenditure not targeted - spread across all schools
- Cookie cutter solutions don't work for many schools
- Little time for parent and community involvement
- Prescribed investment priorities for schools

Implications

- Doing the same a little better is a risky strategy
- Ambition of the BER is limited – it will not rebuild schools
- Unbalanced capital expenditure between sectors remains



Where to now ?

Where to for the BER ?

- Involve parents to build ownership, strengthen inputs and get the best buildings possible
- Masterplan approach to school sites with some customising of solutions – highest priority are schools with space limitations
- Use state capital works money to plug the gaps in Commonwealth funding

Where to in the longer term



- **The next wave of investment—secondary schools**
- **Centring public schools**
- **Investment Strategies for Growth**